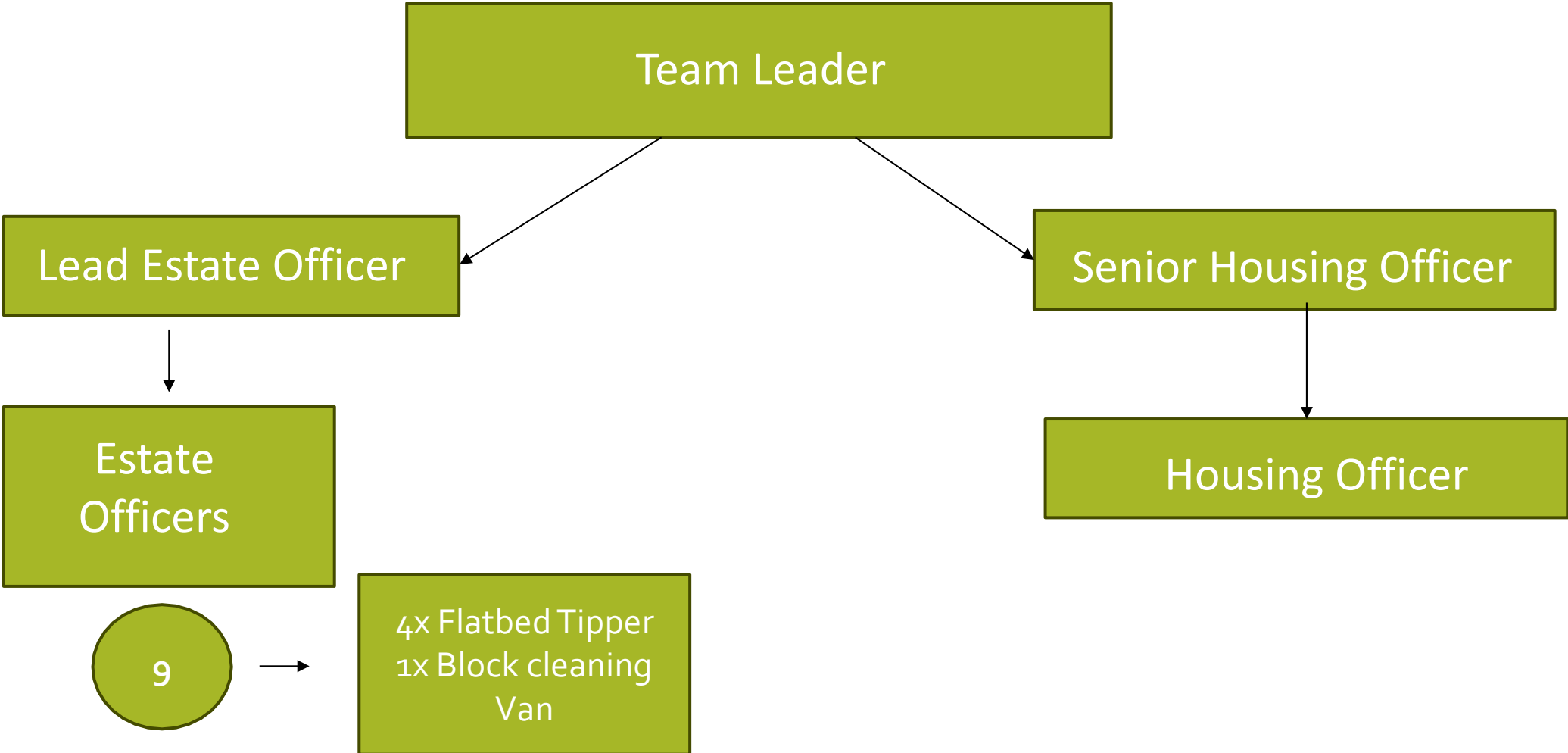


SHEFFIELD CITY COUNCIL ESTATE SERVICES SOUTH-EAST

South-East Estates Team Structure



The Work We Do

- Estate / Block cleaning
- Clearing blocked refuse chutes and ensuring bin rooms clean/clear
- Rubbish collection and disposal
- Graffiti removal
- Weeding and shrub pruning to communal areas, Grey work
- Emptying dry stores and disposal of contents

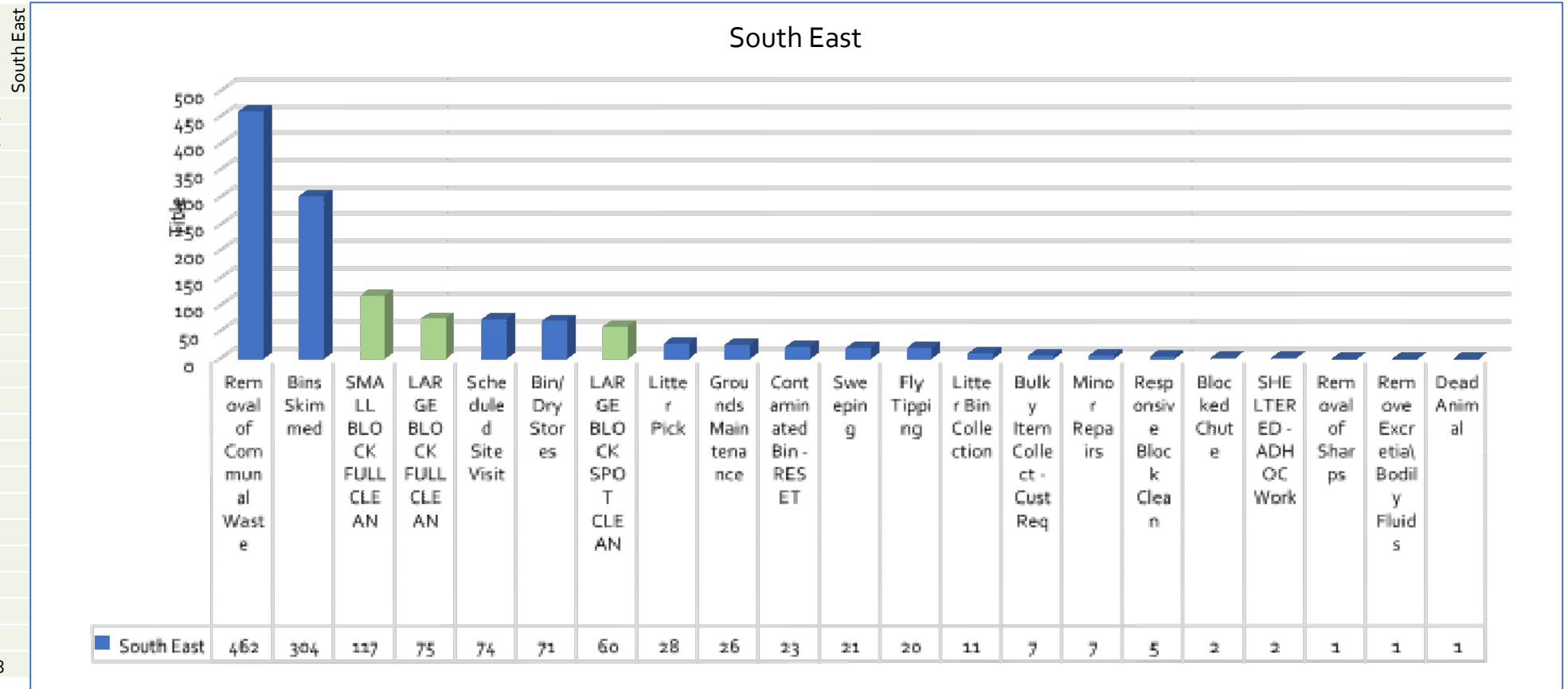
Page 3

Waste Disposal

- Fletchers Waste Management
- Forward Environmental

October 2023

Activity October 2023	Count
Removal of Communal Waste	462
Bins Skimmed	304
SMALL BLOCK FULL CLEAN	117
LARGE BLOCK FULL CLEAN	75
Scheduled Site Visit	74
Bin/Dry Stores	71
LARGE BLOCK SPOT CLEAN	60
Litter Pick	28
Grounds Maintenance	26
Contaminated Bin - RESET	23
Sweeping	21
Fly Tipping	20
Litter Bin Collection	11
Bulky Item Collect - Cust Req	7
Minor Repairs	7
Responsive Block Clean	5
Blocked Chute	2
SHELTERED - ADHOC Work	2
Removal of Sharps	1
Remove Excretia\ Bodily Fluids	1
Dead Animal	1
Grand Total	1318









Sheffield
City Council



Partners
we work
with:

**Central Estates and
Environmental services**

Veolia

Waste Management

Parks and Countryside

Streets Ahead

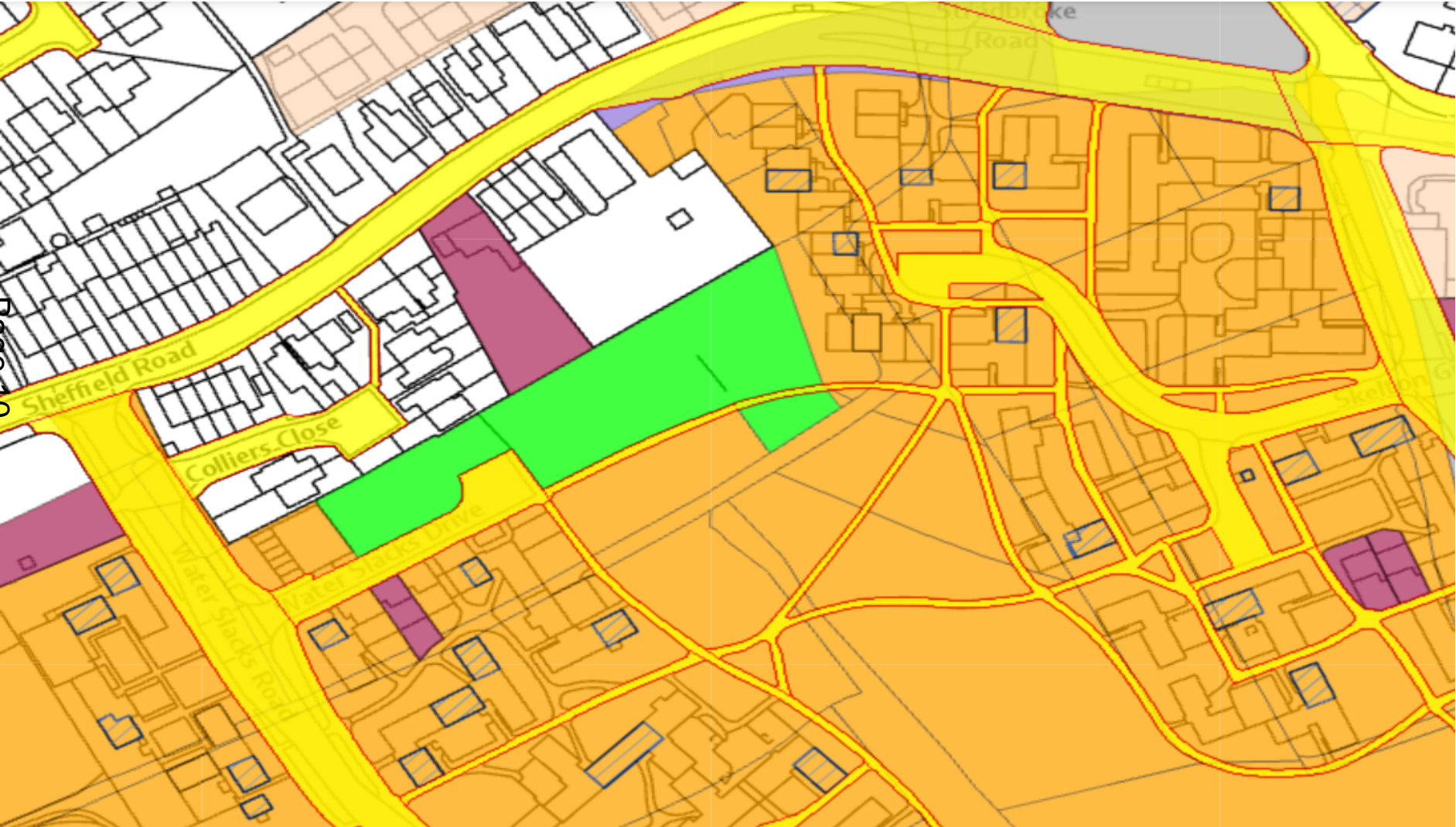
Environmental Services



OPEN SPACE GROUNDS MAINTENANCE TREE MANAGEMENT



Waterslacks Estate – Management Responsibility

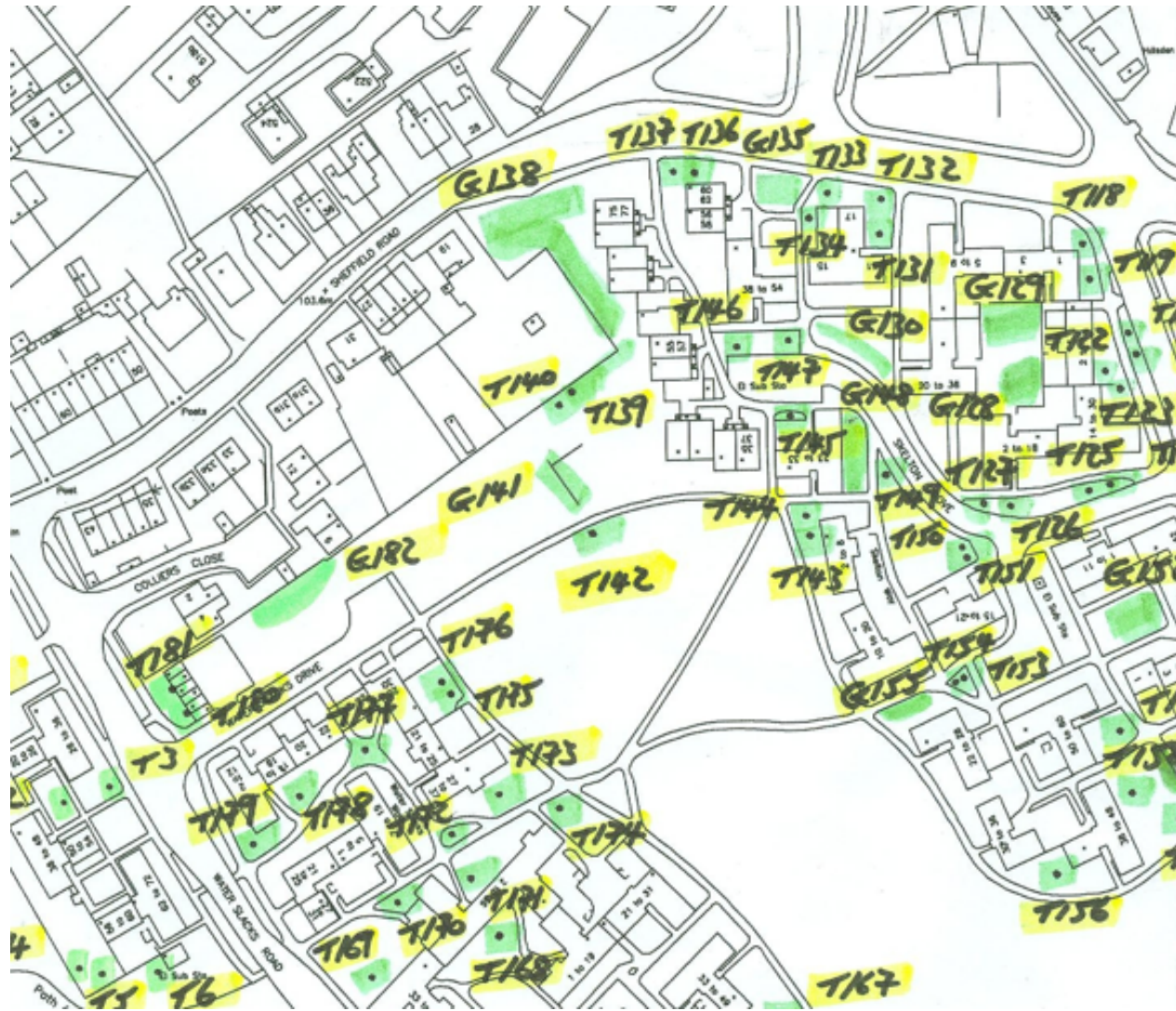


HOUSING

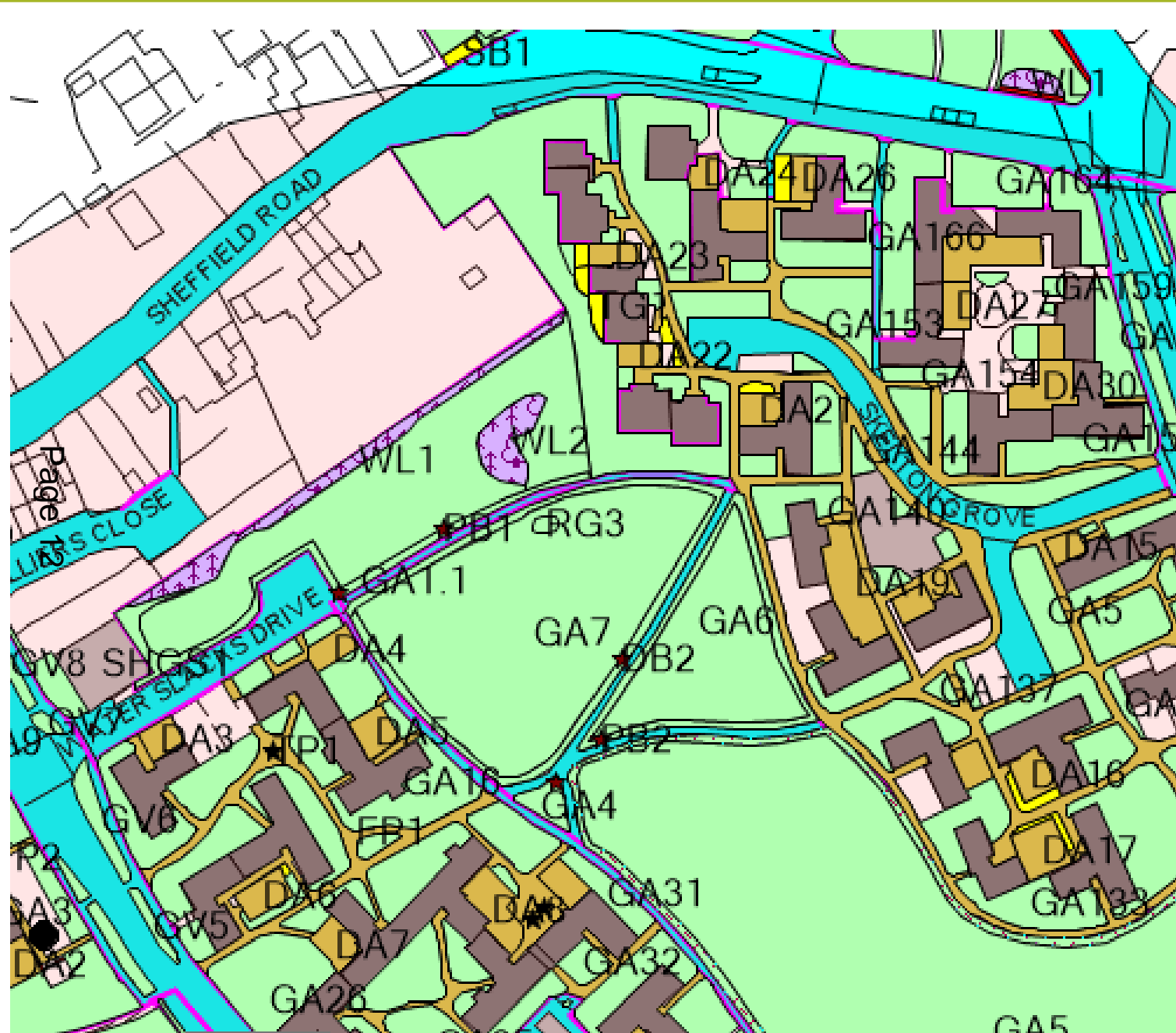
PARKS

AMEY

OTHER



WATERSLACKS TREE INSPECTIONS



WATERSLACKS GROUNDS MAINTENANCE
